

Jinx

A Tale of Twin Witches

created by
JOY BURAN & NOELLE MELODY



LOGLINE



JINX IS A COMING-OF-AGE TALE ABOUT A PAIR OF POWERFUL BUT RECKLESS TWIN WITCHES FIGHTING TO BE SEEN AS INDIVIDUALS IN A MAGICAL WORLD WITH A MYSTERIOUS PAST AND AN EVIL FORCE THREATENING TO DESTROY ITS FUTURE.

STORY SUMMARY

YULE AND LITHA ARE TWIN WITCHES WHO DO EVERYTHING TOGETHER, FROM PRACTICING MAGIC TO HANGING OUT WITH THEIR FRIENDS AT THE WITCH CAFE. BUT NOW THAT THEY'RE ABOUT TO TURN 13 AND FINISH MAGIC MIDDLE SCHOOL, THEY'RE BEGINNING TO SEE THINGS DIFFERENTLY. LITHA LOVES BEING A DYNAMIC DUO, WHILE YULE IS STARTING TO CRAVE INDEPENDENCE.

WHEN THEY'RE PLACED IN SEPARATE COVENS IT SEEMS LIKE BOTH A BLESSING AND A CURSE, THAT IS UNTIL YULE IS ACTUALLY CURSED WITH LOSING HER POWERS. NOT EXACTLY THE DIFFERENCE SHE WAS AFTER.

BUT WHEN AN EXPELLED WITCH RETURNS SEEKING VENGEANCE AGAINST THE SCHOOL, OUR YOUNG WITCHES MUST JOIN FORCES AGAIN TO STOP HER, ALL WHILE JUGGLING FIRST CRUSHES AND FINAL EXAMS BEFORE THE END OF THE WORLD!

ON THEIR 13TH BIRTHDAY OF ALL DAYS!

TWIN MAGIC IS REAL IN THIS STORY OF SISTERHOOD, FRIENDSHIP, AND OVERCOMING POWERLESSNESS WHEN THINGS FEEL OUT OF CONTROL.



the TWINS



meet **LITHA**
IF YOU ASKED her,
SHE'D SAY SHE'S
the MAIN CHARACTER

meet **YULE**
SHE WOULD NEVER
want to be the
MAIN CHARACTER

LITHA

-vs-

YULE

SHINES in
the SPOTLIGHT ✓

DANCES
with a her COVEN
IN THE MOONLIGHT ✓

CHARMES the
HATS off every
WITCH IN THE
ROOM ✓

TAKES TWINSHIP
VERY SERIOUSLY ✓



HAS CRIPPLING
STAGEFRIGHT ✓

RECHARGES
with a good SPELLBOOK
by CANDLELIGHT ✓

ADDES
STRUCTURE to
any ADVENTURE ✓

JUST NEEDS her
SPACE ✓

YULE



whose SKULL
is THAT?!

I'M JUST
OVERTHINKING
things again.

DARCY

her RECLUSIVE
SPIDER FAMILIAR
IS ALWAYS YULE'S
SARCASTIC voice
of REASON



SOUNDS
ABOUT
RIGHT.

TINY HAT



spell GOING exactly
ACCORDING to PLAN



HER ROOM
is in the
BASEMENT



LITHA

MAGICAL MAYHEM!

EDGAR
her IMPUSIVE
BAT FAMILIAR IS
ALWAYS UP FOR
LITHA'S MISCHIEF

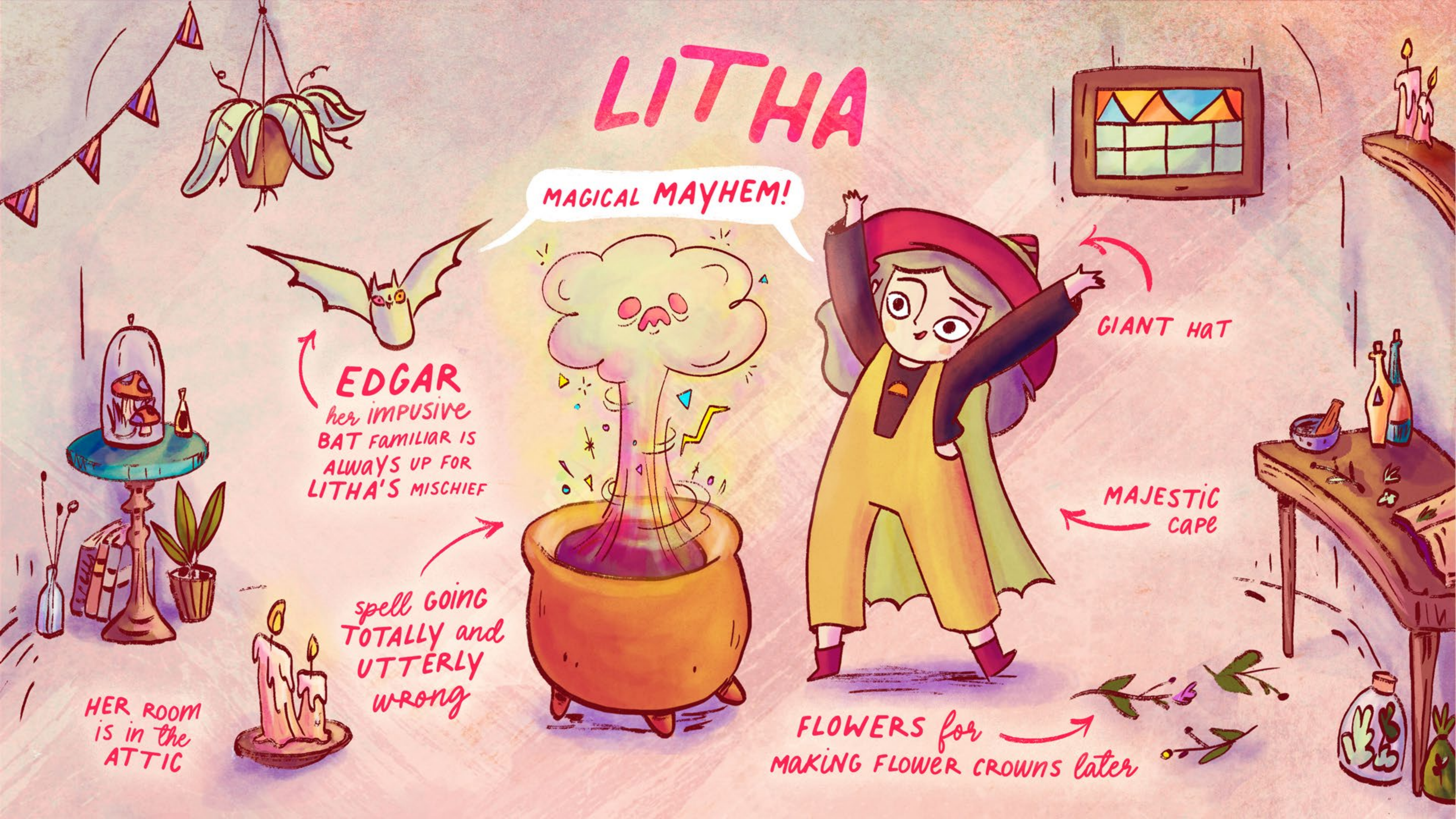
spell GOING
TOTALLY and
UTTERLY
WRONG

HER ROOM
is in the
ATTIC

GIANT HAT

MAJESTIC
CAPE

FLOWERS for
MAKING FLOWER CROWNS later



Their COVEN

PRICE
HE'S AN UNCONVENTIONAL WITCH, INTERESTED IN EVERYTHING NON-MAGIC



WEE
HENSON'S FAMILIAR, THE TOUGHTTEST, FLIGHTLESS BEE YOU'VE EVER MET



GREY
SHE'S THE TWINS' SHARED BEST FRIEND AND VOICE OF REASON



ANICA
GREY'S HIGH MAINTENANCE OWL FAMILIAR



HENSON
HE'S A LOVELY WITCH WITH NO POWERS
THE PERFECT CANDIDATE TO BE LITHA'S AND PRICE'S FIRST CRUSH



EPIPHANY
PRICE'S FLASHY PEACOCK FAMILIAR - HE'S PRETTY AND HE KNOWS IT-



RUTH

A Logical witch
THEY THINK TRUDY'S LOVE FOR THE SUPERNATURAL IS SUPER ADORABLE



ALLISTER

HE USES HUMOR TO COPE WHEN THINGS GET DRAMATIC

HE'D RATHER BE AT THE COMIC SHOP



HAM

ALLISTER'S PARROT FAMILIAR WHO'S ALWAYS UP FOR A LAUGH.



JADE

SHE'S A TOO-COOL SKATER WITCH

kind of FULL of HERSELF TBH



RIPPLE

JADE'S CHILL FROG FAMILIAR

SCOOP

RUTH'S HARD-NOSED RABBIT FAMILIAR



SMIFF

TRUDY'S STYLISH OTTER FAMILIAR
ONLY SHOPS VINTAGE



TRUDY

SHE'S REALLY INTO TAROT, SEANCES, and CRYSTALS

BUT NOT AS MUCH AS SHE'S INTO RUTH



Their
COVEN
Continued

PIPES

VIOLA'S RARE WHITE CROW FAMILIAR WITH A HYPNOTIZING SINGING VOICE



one KARMA LATTE comin' your way!

VIOLA

A COOL, UNDERSTANDING ADULT AND MENTOR

SHE'S ALSO THE OWNER OF ...

The WITCHES BREW

apothecary & cafe

A PLACE WHERE LITHA and YULE CAN GO TO READ SPELL BOOKS and HANG OUT WITH THEIR COVEN AFTER SCHOOL.

JETT

The local vet and UNOFFICIAL ANIMAL RESCUE (YOU KNOW, YOUR BASIC HERO)

HE HAS A SWEET TOOTH FOR VIOLA and HER PUMPKIN GROVE PIE



GEENA

The TWINS' MOM

WORKS AS A
FORTUNE TELLER AT
FORTUNE FAVORS

GROUNDING,
INTUITIVE,
and TRUSTS
HER GUT

HER CRYSTAL
BALL SEES
SOMETHING
OMINOUS in the
TWINS' FUTURE



CAT

GEENA'S UNFLAPPABLE
BUTTERFLY FAMILIAR
HELPS HER FIND CALM
When DARK PREMONITIONS
CAUSE HER TO WORRY



PIERCE

SPOOKY
INGREDIENTS!

WOLFGANG

PIERCE'S LOYAL
SOUS-CHEF and WOLF FAMILIAR
who IS A VERY GOOD BOY AND
100 PERCENT VEGAN

The TWINS'
DAD

OWNER and
HEAD chef at GEMINI
RESTAURANT

HE has HIS HEAD
in the CLOUDS, IS
EASY GOING, and
LONGS to TRAVEL

SOMETHING
MAGICAL
IS BREWING!



CHAOS

THIS WITCH
IS ALSO A TWIN.
AN EVIL TWIN!



AND THIS IS
HER SLY FOX,
VEX



WAIT - A HAT
WITH TWO POINTS?
WHAT'S UNDER
THERE?!

A MANIACAL
UNHINGED
LUNATIC

WITH
SEEMINGLY
LIMITLESS
POWER

BANISHED FROM
ELSEWITHER
FOR STEALING HER TWIN
SISTER'S MAGIC



COSMOS

CHAOS'
TWIN SISTER

The
Favorite
Child

CHAOS
HATES
THIS

Head Witch
of her Coven

AND
THAT!



Her swift and
devoted Gazelle,
Beacon

radiates
ORDER and
Harmony

THIS REALLY
DRIVES CHAOS
CRAZY

BADDIES



LEANAN

A TRICKSTER FAERIE WHO FEEDS ON THE IMAGINATION OF HER VICTIMS, LEAVING THEM FEELING DRAINED AND UNINSPIRED.

INKLING

A GHOST CAT WHO BROKE HIS FAMILIAR BOND WITH HIS WITCH IN ORDER TO SERVE CHAOS.



SERVITORS

EVIL BEINGS CREATED FROM CHAOS' MAGIC AND BOUND TO THE WILL OF THEIR MAKER, THEY WREAK GENERAL HAVOC ON THE WITCHES BUT HAVE NO MEMORY OF THEIR MISSIONS.

CHIMERA

A HYBRID BEAST CREATED FROM A BOTCHED SPELL, SHE CONTAINS THE WORST TRAITS OF THE WITCHES WHO MADE HER AND HAS A SERIOUS PROBLEM WITH THEM. (HINT: IT'S LITHA AND YULE.)





OUTLINE

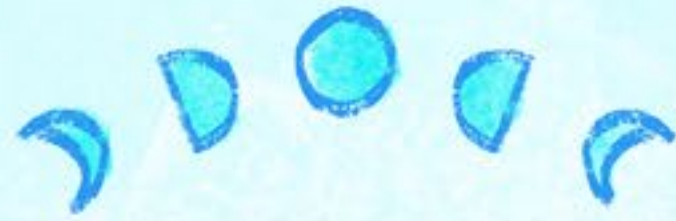
SISTERS YULE AND LITHA HAVE ALWAYS HAD A SPECIAL CONNECTION – READING EACH OTHER'S MINDS, FEELING EACH OTHER'S PAIN, AND BEING TWO PLACES AT ONCE ALL COME WITH THE TWIN WITCH TERRITORY. BUT EVEN IN THEIR WITCHY WORLD OF ELSEWITHER, PEOPLE THINK TWINS ARE WEIRD. "YULE IS THE SMART ONE, LITHA IS THE FUN ONE" – THAT'S HOW EVERYONE TELLS THEM APART EXCEPT FOR THEIR PARENTS, THEIR SHARED BFF, GREY, AND THEIR ANIMAL FAMILIARS (WHO CAN TALK BUT WOULD NEVER SAY SUCH THINGS). YULE, FOR ONE, HATES HOW PEOPLE SEE HER. THE SMART ONE? JUST BECAUSE SHE'D RATHER CURL UP WITH A SPELLBOOK THAN DANCE UNDER A FULL MOON LIKE HER SISTER DOESN'T MEAN SHE ISN'T FUN. LITHA DOESN'T MIND, IN FACT SHE LIKES THE ATTENTION ...EVEN THOUGH HER SPELLS DON'T ALWAYS GO ACCORDING TO PLAN. AS YULE FIGHTS TO BE SEEN AS MORE OF AN INDIVIDUAL, SHE AND LITHA START FIGHTING MORE IN GENERAL – THEY CAN'T EVEN AGREE ON WHAT TO DO FOR THEIR UPCOMING 13TH BIRTHDAY.

WHEN YULE'S METICULOUS PLANS TO HAVE AN INTIMATE SEANCE ARE RUINED BY LITHA'S INSISTENCE ON THROWING AN ALL-OUT RAGER, THAT'S THE LAST STRAW. YULE THREATENS TO DO HER OWN THING, BUT HER CODEPENDENT TWIN IS NOT HAVING IT. THEIR DISAGREEMENT GETS A LITTLE OUT OF HAND AND THEY END UP SPLITTING THE HOUSE IN HALF. WHOOPS! DIDN'T KNOW THEY COULD DO THAT.

WORD GETS OUT ABOUT THE TWINS' EXPLOSIVE ARGUMENT AND THEY ARE PLACED IN SEPARATE COVENS AT PUMPKIN GROVE PUBLIC CHARM SCHOOL FOR THE FIRST TIME IN THEIR LIVES. LITHA IS TERRIFIED AT THE PROSPECT OF BEING SPLIT UP – SHE'S ALWAYS EMBRACED THEIR TWINDOM. MEANWHILE, YULE IS SECRETLY LOOKING FORWARD TO THIS. FINALLY, AN OPPORTUNITY TO STEP OUT OF LITHA'S SHADOW AND INTO HER INDIVIDUALITY.

THE SEPARATION DOESN'T PLAY OUT AS EITHER TWIN EXPECTS

LITHA'S SOCIAL SKILLS QUICKLY ALLOW HER TO SHINE AND MAKE TONS OF FRIENDS WHILE YULE IS SURPRISINGLY LONELY AND LOST. EVEN THEIR BESTIE, GREY, IS IN LITHA'S COVEN! BUT GREY WISELY SUGGESTS THAT YULE PUT HER ENERGY TOWARDS TUTORING HENSON, A BOY IN HER COVEN BORN WITH NO POWERS AT ALL. HE PRACTICES "LEARNED MAGIC", AND WHILE YULE ALWAYS FELT SORRY FOR HENSON WITH HIS TINCTURES AND TALISMANS, SHE NOW WELCOMES HIS FRIENDSHIP. LITHA SOON DEVELOPS A MASSIVE, DEBILITATING CRUSH ON HENSON. IT'S HARD NOT TO FEEL INSANELY JEALOUS OF THE TIME HER SISTER GETS TO SPEND WITH HIM AFTER SCHOOL. LITHA CONFIDES IN HER FRIEND, PRICE, A BOY WHO IS FASCINATED BY ALL THINGS NON-MAGICAL (HE IS CURRENTLY READING A BOOK CALLED "HUMANS AND OTHER MYTHS"). PRICE ADMITS THAT HE, TOO, HAS A CRUSH ON HENSON. THEY TAKE THEIR TORTURED HEARTS TO THE WITCHES BREW CAFE WHERE TRUDY AND RUTH, THE CUTEST COUPLE AT SCHOOL, GIVE THEM LOVE ADVICE.



OVER WINTER BREAK, A TIME WHEN YULE IS USUALLY RECHARGED, SHE FEELS DRAINED. HER MAGIC ISN'T WORKING LIKE IT SHOULD. AT FIRST, IT'S JUST A SPELL OR TWO GONE WRONG, BUT BY THE TIME SCHOOL STARTS UP AGAIN, NOTHING HAPPENS THE WAY SHE INTENDS. SHE'S WORSE AT MAGIC THAN LITHA! YULE MUST BE CURSED – AND FOR SOME REASON, JADE, A MEAN-GIRL WITCH IN YULE'S COVEN WITH A HOVERBOARD AND PERMANENT SIDE-EYE, SPREADS RUMORS THAT LITHA IS TO BLAME. WHERE IS ALL OF THIS HOSTILITY COMING FROM? ALLISTER, JADE'S SUPREMELY CHILL FRIEND, SAYS, "JADE JUST HAS SOME STUFF SHE'S NOT DEALING WITH," BUT HER LIES START TO SPREAD.

EVERYONE IN TOWN STARTS LOOKING AT THE TWINS WITH SUSPICION AND EVEN FEAR.

THEIR FATHER, PIERCE, ASSURES EVERYONE IT'S NOT AT ALL A SIGN THAT THE TWINS ARE HARBINGERS OF ANY KIND OF APOCALYPSE, BUT THEIR MOTHER, GEENA, IS NOT SO SURE. SHE'S BEEN HAVING TERRIFYING VISIONS OF HER DAUGHTERS IN DANGER FOR MONTHS. GEENA IS AFRAID IF SHE WARNS THE TWINS, HER VISIONS WILL COME TO PASS. SHE GIVES THEM A SUGAR-COATED VERSION BUT THE TWINS ARE NOT BUYING IT. TO GET THE REAL TEA, YULE, LITHA, AND THEIR FRIENDS HEAD TO THE WITCHES BREW. THE OWNER, VIOLA, IS LIKE THAT COOL ADULT THEY CAN TALK TO ABOUT STUFF WHEN THEY DON'T WANT TO FREAK OUT THEIR PARENTS.

AFTER MUCH BADGERING, VIOLA BREAKS OUT A DUSTY OLD YEARBOOK AND FLIPS TO THE PAGE OF CHAOS AND COSMOS, TWINS WHO WERE ONCE THE MOST POWERFUL WITCHES IN CHARM SCHOOL. LIKE YULE, CHAOS GREW LESS POWERFUL WHILE COSMOS GREW MORE, SO CHAOS DECIDED TO STEAL COSMOS' POWER FOR HERSELF! THIS DARK MAGIC GOT CHAOS EXPELLED FROM THE SCHOOL, BANISHED FROM PUMPKIN GROVE, AND COSMOS WAS NEVER SEEN OR HEARD FROM AGAIN.

SITTING IN THE BACK OF THE CAFE AND DRINKING YUMMY, SWEET ELIXIRS, THE KIDS ARE TOTALLY PUMPED TO UNCOVER THE MYSTERY. YULE GETS OUT HER PLANNER AND PLOTS AN ELABORATE QUEST TO SEARCH FOR COSMOS, BUT SURPRISINGLY, THE YOUNG SEARCH PARTY FINDS HER IN THE VERY FIRST PLACE THEY LOOK. "COULD COSMOS REALLY HAVE BEEN LIVING IN A HUT OUTSIDE OF TOWN IN THE DARK-DARK WOODS THIS WHOLE TIME WITHOUT ANYONE NOTICING?" RUTH'S INVESTIGATIVE INSTINCTS SAY THIS IS TOO EASY, AND THEY'RE RIGHT; THIS IS CHAOS INSTEAD. TWIN TRICKERY! (THEY ALL HONESTLY SHOULD'VE SEEN THAT COMING.) CHAOS HAS BEEN WATCHING THEM VIA CRYSTAL BALL AND IS ANNOYED THESE TWEEN WITCHES HAVE BEEN DIGGING UP DIRT ON HER. THEIR INNOCENT INVESTIGATION REMINDS HER JUST HOW UNFAIRLY SHE WAS TREATED BY HER PEERS – CASTING HER OUT WAS NOT COOL – SO CHAOS DECIDES TO GET REVENGE ON THE TOWN OF PUMPKIN GROVE ONCE AND FOR ALL. AND AS A SPECIAL GIFT TO YULE AND LITHA FOR UNEARTHING THESE FOND MEMORIES, CHAOS PLANS TO STRIKE ON THEIR 13TH BIRTHDAY.



AND TO TOP IT ALL OFF, FINALS ARE COMING UP. HENSON IS DETERMINED TO HELP YULE GET BACK ON HER SPELL GAME AND LEARN MAGIC ALL OVER AGAIN, BUT IT'S NOT EASY FOR HER – YULE ISN'T GOOD AT BEING BAD AT THINGS. LITHA TRIES TO BE THERE FOR HER SISTER, BUT AS SHE FINDS HERSELF BECOMING MORE AND MORE POWERFUL, SHE FEELS COMPELLED TO HIDE IT FROM YULE. THEY NEVER KEPT SECRETS FROM EACH OTHER BEFORE.

MEANWHILE, THE PUMPKIN GROVE VETERINARIAN, JETT, FINDS A LOST GAZELLE IN THE WOODS, AND UNLIKE THE OTHER ANIMAL FAMILIARS IN TOWN, THIS ONE DOESN'T SPEAK. INDULGING IN HIS NOTORIOUS SWEET TOOTH FOR KARMA LATTES AND THE COMPANY OF CUTE BARISTAS, HE GOES TO THE WITCHES BREW AND MENTIONS HIS STRANGE FINDINGS TO VIOLA. SHE REMEMBERS A WITCH WHO ONCE HAD A GAZELLE FAMILIAR AND THAT WITCH WAS COSMOS. TRUDY AND RUTH OVERHEAR THIS AS THEY'RE STUDYING FOR THEIR FINALS AND FOLLOW VIOLA AND JETT BACK TO THE GAZELLE.

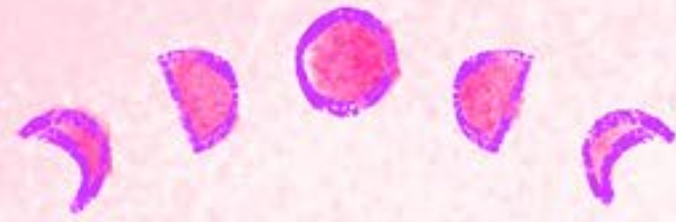
CHAOS IS NOW BECOMING OBSESSED WITH HER OWN FINAL PROJECT: TAKING OVER THE SCHOOL AND BREAKING UP THE TWINS FOR EXTRA CREDIT. CHAOS FINDS YULE AND TEMPTS HER INTO GETTING HER POWER BACK, ONLY IF SHE WILL ACCEPT LITHA'S AS WELL. YULE REFUSES. SHE WOULD NEVER STOOP SO LOW AS TO STEAL HER OWN SISTER'S POWER (LIKE SOME PEOPLE). CHAOS THEN APPROACHES LITHA, ENCOURAGING HER TO USE HER NEW POWER.

LITHA CONVINCES CHAOS TO TELL HER SIDE OF THAT ORIGIN STORY

URNS OUT, CHAOS WAS TERRIBLY NEGLECTED AS A CHILD AND WASN'T RAISED TO BELIEVE SHE HAD ANY INTRINSIC VALUE BEYOND HOW POWERFUL SHE COULD BECOME. HER MOM ACTUALLY SAID THE WORDS, "I DON'T WANT YOU." ALL CHAOS REALLY NEEDED WAS TO BE LOVED – ESPECIALLY BY HER SISTER – BUT HER JEALOUSY AND RESENTMENT ALWAYS GOT IN THE WAY.

LITHA CAN'T HELP BUT RELATE TO CHAOS' PLAYFUL RECKLESSNESS AND EVEN HER JEALOUSY, BUT ISN'T TOTALLY FALLING FOR THIS SOB STORY. CHAOS REALIZES SHE WILL NOT COME ALONG QUIETLY. TIME TO DEVISE AN EVIL SPELL. SHE RECRUITS JADE, WHO AGREES TO TRICK LITHA. SHE BRINGS UP LITHA'S SAD LITTLE CRUSH ON HENSON, "IT'S NO SECRET, EVERYONE KNOWS." JADE PRETENDS TO HAVE PUT TOGETHER A HEARTBREAK PLAYLIST OF SONGS TO CRY TO. LITHA CAN'T BELIEVE THEY ARE ALMOST BONDING AFTER THE THINGS JADE SAID ABOUT HER AND YULE. LITHA PRESSES PLAY AND IMMEDIATELY FEELS BETTER LEANING INTO THE MOODY TUNES, CARELESSLY FALLING UNDER THE SPELL. LITHA IS HYPNOTIZED INTO JOINING CHAOS' RANKS.

THE WORLD DESCENDS INTO CHAOS



ON THE OTHER SIDE OF TOWN, JETT TAKES VIOLA TO HIS ANIMAL SANCTUARY WHERE THE GAZELLE IS GRAZING IN THE GARDEN. AS THEY FIGURE OUT WHAT TO DO, THEY CATCH TRUDY AND RUTH SPYING ON THEM. TRUDY HAS BEEN STUDYING TAROT AND USES THE CARDS TO COMMUNICATE WITH THE GAZELLE. HER NAME IS BEACON.

IT'S NOW THE EVE OF YULE AND LITHA'S BIRTHDAY. CHAOS BRINGS ON A STORM OF CONFUSION, AND TO EVERYONE'S SURPRISE, LITHA IS BY HER SIDE! YULE COMES TO HER RESCUE, FOLLOWED BY THEIR PARENTS, GEENA AND PIERCE, WHO TURN OUT TO BE PRETTY SCARY WHEN SOMEBODY MESSES WITH THEIR KIDS. THEY BAND TOGETHER WITH ALL THE WITCHES IN TOWN TO FIGHT CHAOS AND HER MIND-CONTROLLED ARMY, WHO HAVE AMASSED AN INSURMOUNTABLE AMOUNT OF POWER. AN EPIC BATTLE ENSUES! IT LOOKS LIKE CHAOS IS GOING TO TAKE OVER AND TAKE LITHA AWAY. YULE TRIES DESPERATELY TO REACH LITHA, BUT IN HER PANIC AND FEAR, THEIR WIRES KEEP GETTING CROSSED. YULE REALIZES THE CONNECTION THEY SHARED WAS A GIFT AND NOT SOMETHING TO TAKE FOR GRANTED.

AT THAT MOMENT, YULE KNOWS WHAT SHE MUST DO. EVEN THOUGH SHE ISN'T POWERFUL IN THE WAY SHE ONCE WAS, SHE ACCEPTS WHO SHE IS NOW AND USES A CHARM FROM HENSON TO TELEPATHICALLY CONNECT WITH LITHA, BREAKING THE SPELL CHAOS HAS OVER HER. UNITED, YULE AND LITHA OVERCOME CHAOS BY WORKING TOGETHER AND COMBINING THEIR UNIQUE POWERS.

JUST BEFORE THE FINAL BLOW, THE GAZELLE, BEACON, STEPS IN AND SPEAKS, SUMMONING HER WITCH. COSMOS APPEARS! AFTER ALL THIS TIME, SHE HAS BEEN JUST FINE – HANGING OUT IN A WORLD WHERE MAGIC IS A THING OF MYTH, AND MORE THAN SPELLS AND POTIONS. (PRICE KNEW SUCH A PLACE EXISTS!)

COSMOS THEN DOES SOMETHING NO ONE EXPECTS: SHE FORGIVES CHAOS FOR EVERYTHING SHE'S DONE. CHAOS' POWER IS ULTIMATELY DEFEATED NOT BY MORE POWER, BUT BY HER SISTER'S LOVE.

TWIN MAGIC FOR THE WIN!

AT THAT, JADE HAS HAD IT. SHE REVEALS HERSELF TO BE CHAOS AND COSMOS' LONG-LOST HALF-SISTER AND MONOLOGUES HOW SHE'S ALWAYS FELT LEFT OUT BY THEIR RELATIONSHIP, "HOW CAN YOU COMPETE WITH TWO SISTERS NAMED CHAOS AND COSMOS? COME ON!" SHE ONLY WENT ALONG WITH CHAOS' EVIL SCHEMES TO FEEL LIKE SHE WAS INCLUDED. GUESS JADE REALLY HAS BEEN DEALING WITH SOME DEEP STUFF. CHAOS, COSMOS, AND JADE HUG IT OUT AND TAKE THEIR SOAP OPERA DRAMA TO FAMILY THERAPY. CHAOS WILL FINALLY HAVE TO LEARN TO LIVE AS A WITCH WITH NO POWER JUST AS YULE AND LITHA FINALLY LEARN TO WORK TOGETHER, USING BOTH MAGIC AND THE JUST-AS-MAGICAL POWER OF SISTERHOOD AND FRIENDSHIP. YULE AND LITHA CELEBRATE THE CHAOS OF BEING TEENAGE TWIN WITCHES WITH A COMPROMISE – A SHARED BIRTHDAY BASH NO ONE WILL EVER FORGET.

LOCATIONS



our story takes place in
The magical world of

ELSEWITHER



WELCOME
To
PUMPKIN GROVE
LITHA and YULE'S village

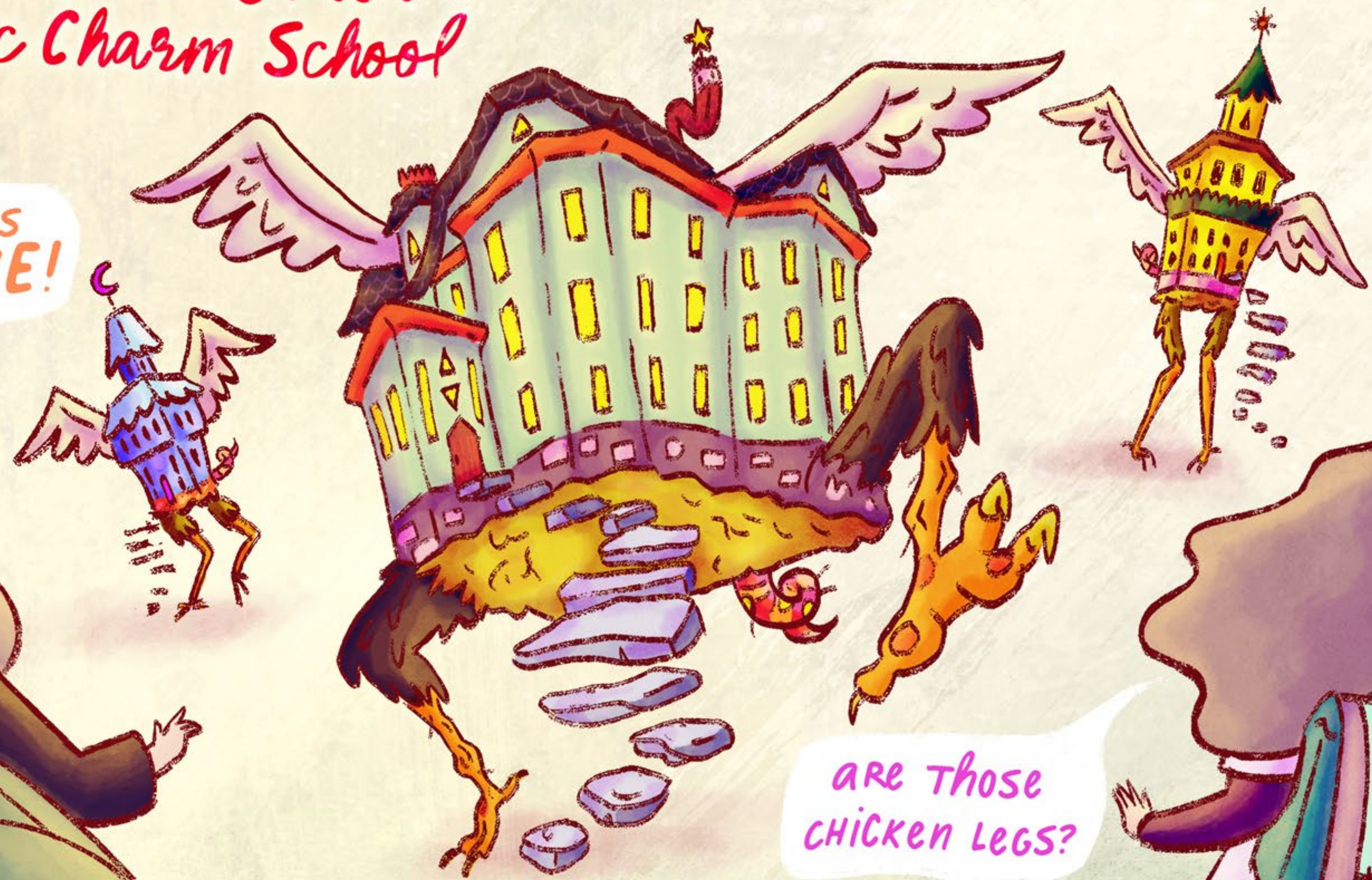


their MOM is a
FORTUNE TELLER

their DAD OWNS
GEMINI RESTAURANT

PUMPKIN GROVE Public Charm School

OUR SCHOOL IS
TOTALLY ALIVE!



are those
CHICKEN LEGS?

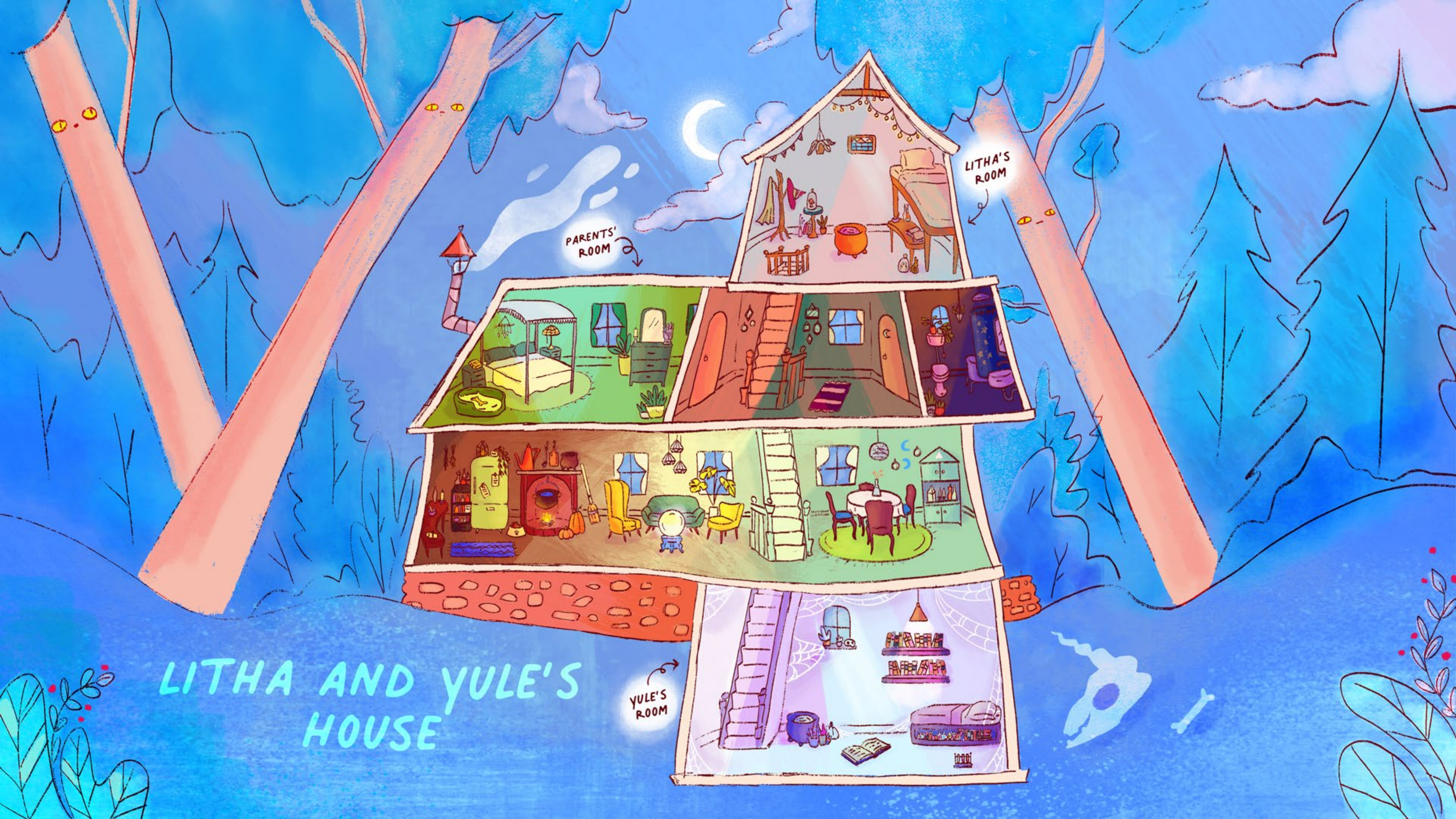


adventure awaits in

THE DARK DARK WOODS



AMONGST
OTHER
THINGS...

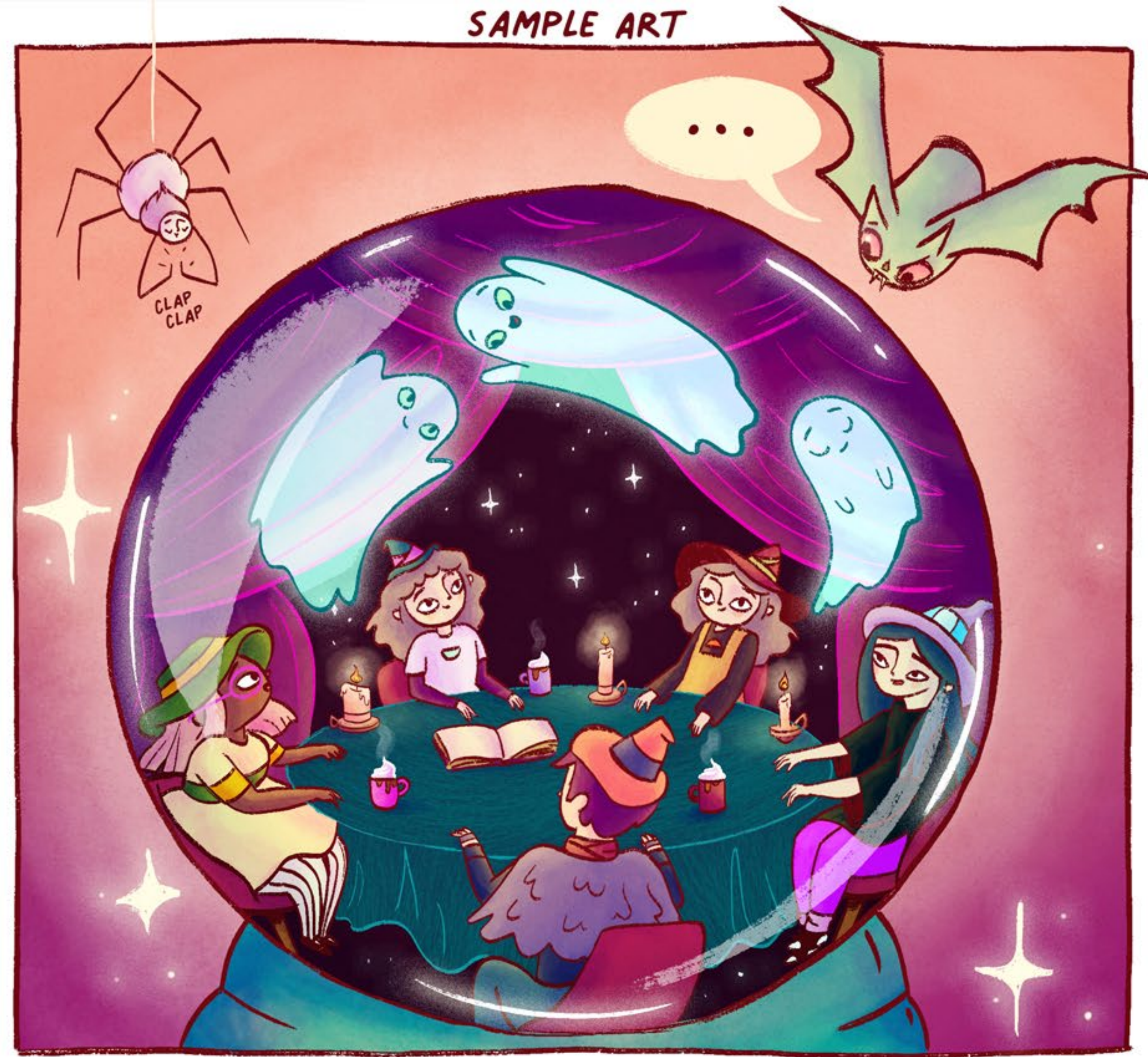


LITHA AND YULE'S HOUSE

PARENTS' ROOM

LITHA'S ROOM

YULE'S ROOM





OUR 13TH BIRTHDAY PARTY.

I'VE GOT IT ALL PLANNED OUT.

IT'LL BE AN INTIMATE SÉANCE WITH OUR CLOSEST FRIENDS.



WE'LL HAVE CANDLES.



COCOA.



THE GHOSTS OF ANCIENT LIBRARIANS.

IT'S GOING TO BE -

BORING!

SHHH!



YOU'RE BORING.

YOUR BOOOOKS ARE OVERDOOOO.



BUT YULE!
THIS IS OUR 13TH
BIRTHDAY.



IT HAS TO
BE EPIC!

WITH
FIREWORKS!

AND
DANCING!

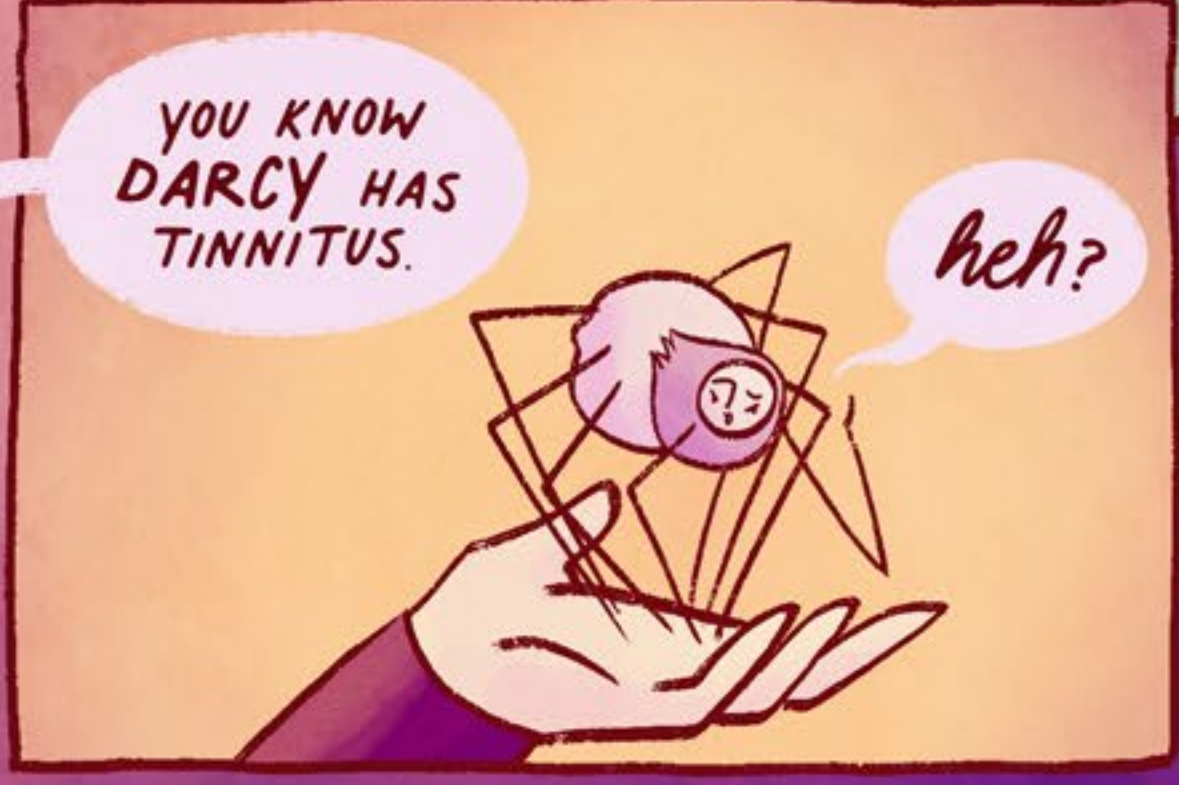


AND A
LEVITATION
LOUNGE!

SOMEONE
CALL EARTH,
AIR, AND WATER
CUZ THIS PARTY
IS FIRE!



THAT ALL
SOUNDS VERY
LOUD.



YOU KNOW
DARCY HAS
TINNITUS.

heh?



MY PARTY WILL BE
SO COZY AND
SOPHISTICATED.

BUT MY PARTY WILL
BE THE TALK OF THE
TOWN FOR THE REST
OF THE YEAR!

OH LITHA, AS A
13-YEAR-OLD WOMAN,
I NO LONGER CARE
WHAT OTHER PEOPLE
THINK OF ME.

MY PARTY WILL
SHOW EVERYONE
AT SCHOOL HOW
COOL WE ARE!

NEITHER
DO I!



they BOTH
care.

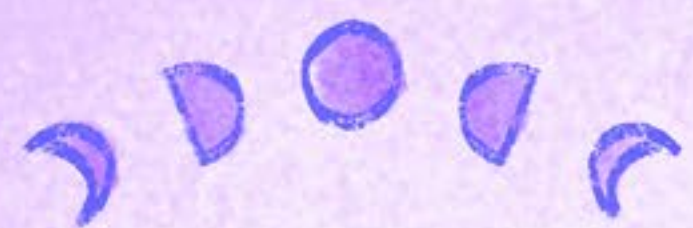
OH, 100
PERCENT.

WELL, MAYBE
I'LL JUST DO MY
OWN THING.



The CREATORS

JOY BURAN + NOELLE MELODY ARE THE ARTISTS AND CREATORS BEHIND JINX. THEY ARE NY-BASED ILLUSTRATORS, ANIMATORS, AND, AS IT HAPPENS, TWINS. THEY BOTH STUDIED MEDIA ARTS AT PRATT INSTITUTE WHERE THEY JOINED FORCES ON THEIR THESIS FILM, WHICH WENT ON TO RECEIVE NUMEROUS FESTIVAL PRIZES AND HIT OVER 1 MILLION VIEWS ON YOUTUBE. AFTER GRADUATING, THEY OPENED THEIR OWN ANIMATION STUDIO WITH SELECT CLIENTS INCLUDING NETFLIX, HULU, CARTOON NETWORK, NICKELODEON, AMAZON STUDIOS, AND SESAME STUDIOS. JOY AND NOELLE RECENTLY WORKED AS ANIMATION DIRECTORS ON CARTUNA'S ANNIE-NOMINATED SERIES "HUMAN KIND OF" FOR FACEBOOK WATCH, CREATED BY DIANA MCCORRY (THEIR WRITING PARTNER IN CRIME FOR JINX)! WHEN THE TEAM AT MIGHTY OAK INVITED US TO COLLABORATE, WE WERE EAGER TO TELL THIS PERSONAL STORY OF CONNECTION THESE SISTERS SHARE - TOUCHING ON THEMES OF YOUTH EMPOWERMENT, DIVERSITY, AND HARMONY, CELEBRATING WHAT MAKES EACH OF US THE SAME AND UNIQUE ALL AT ONCE.



AWESOME STUFF ABOUT US!

The WRITER

DIANA MCCORRY IS A WRITER, DIRECTOR, PRODUCER, ANIMAL LOVER, AND SCIENCE FICTION FAN BASED IN LOS ANGELES. DIANA CREATED AND WROTE "HUMAN KIND OF", FACEBOOK WATCH'S ANNIE NOMINATED ANIMATED SERIES, AND CO-WROTE TAMMY'S TINY TEA TIME, WHICH PREMIERED AT THE 2018 SUNDANCE FILM FESTIVAL. HER STORIES FOR THE TRUTH PODCAST HAVE EARNED HER A SARAH LAWRENCE INTERNATIONAL AUDIO FICTION AWARD AND TWO HEARSAY AUDIO PRIZES, AND HAVE BEEN FEATURED IN THE NEW YORK TIMES AND ON NPR'S SNAP JUDGMENT. SHE LOVES SPACE, MONSTERS, AND ABOVE ALL, SPACE MONSTERS. SHE HOPES TO DIE HAVING WRITTEN A PIECE OF SPECULATIVE FICTION FOR EVERY MEDIUM IN THE KNOWN UNIVERSE. ASK HER ABOUT THE TIME SHE MADE HER MOM DRIVE HER TO ROSWELL.

MIGHTY  OAK

The
TEAM

MIGHTY OAK IS AN EMMY-NOMINATED, WOMAN AND QUEER-OWNED ANIMATION STUDIO BASED IN NEW YORK CITY THAT SPECIALIZES IN STOP MOTION, 2D, 3D, AND MIXED MEDIA. ALONG WITH OUR AWARD-WINNING WORK FOR NETWORKS LIKE NETFLIX AND HBO, OUR COMMERCIAL PROJECTS HAVE GARNERED OVER 5 BILLION VIEWS ACROSS VARIOUS PLATFORMS, EARNING US A SPOT ON FAST COMPANY'S LIST OF MOST CREATIVE PEOPLE IN BUSINESS (TWO SPOTS BELOW MICHELLE PFEIFFER). OUR FIRST ORIGINAL SHORT FILM, UNDER COVERS, PREMIERED AT SUNDANCE.